

Location Map

(Map not to scale)

ARGCity
city within a city

Site Address :
Near Ashok Udyan,
Jaipur Road, Ajmer - 305 023

ARG Infra Developers Pvt. Ltd.

Promoters :



Corporate Office :

E-52, Chitrangan Marg, C-Scheme, Jaipur-302 001

T : +91 141 4086677 • F : +91 141 4086666 • M : +91 9799222555

E : sales@arggroupjaipur.com • Web : www.arggroupjaipur.com

For Ajmer :

T : +91 145 2620086 • M : +91 93515 11133, 93516 11133

Architects :

m | a | architects • E : studio@maarchitects.in

Service Consultant :



SPECTRAL : Delhi

Landscape Consultant :

ARI Daman Design LLC, USA, 319 Bedford Avenue,
2nd Floor, Brooklyn, New York City, NY 11211

Project Management Consultant :

Development 2020, Ahmedabad

ash Design Studio 98290011920

Rosewood
— villas & penthouses —

Palatial lifestyle with royal comfort...



welcome to

one of the most sought after place for living...

A world filled with happiness and tranquility that comes with environs..

Gated communities that boasts of world-class facilities and amenities in an oriental ambience... that will house a vibrant community of families.

A home as a retreat. A place you can escape from the stress of busy schedules. **ARG Rosewood Villas & Penthouses** has been conceptualized to create a unified theme with variations to provide individuality for each neighborhood. Accordingly, a well-planned residential environment is being built to provide an array of housing choices - villas and luxury penthouses... to cater to the needs and tastes of the discerning people.

Welcome home... to

Rosewood
—villas & penthouses—



Rosewood
—villas & penthouses—

PROJECT OVERVIEW

- 76 Luxury Penthouses
- 26 Premium Villas
- Ultra Modern Club House



UNMATCHED LIFESTYLE ADVANTAGES

- Double Height Squash Court • Swimming Pool • Separate Kid's Pool • Steam Bath
- Table Tennis • Billiards Room • Elegant Lobby • Multipurpose Party Hall
- Indoor Games Room (Chess & Carrom) • Fully equipped Gymnasium
- Peaceful Library • Cafeteria • Open Air Theater & Paved Court

The Rosewood PENTHOUSES

Living at ARG Rosewood, you will agree, has its own share of perks. You have the privacy of your own luxury penthouse, the lifestyle of a plush resort, club facilities and the advantage of having like-minded individuals as neighbours. With best-in-class comforts and amenities, exclusivity after all is a privilege.

4 BHK Penthouse



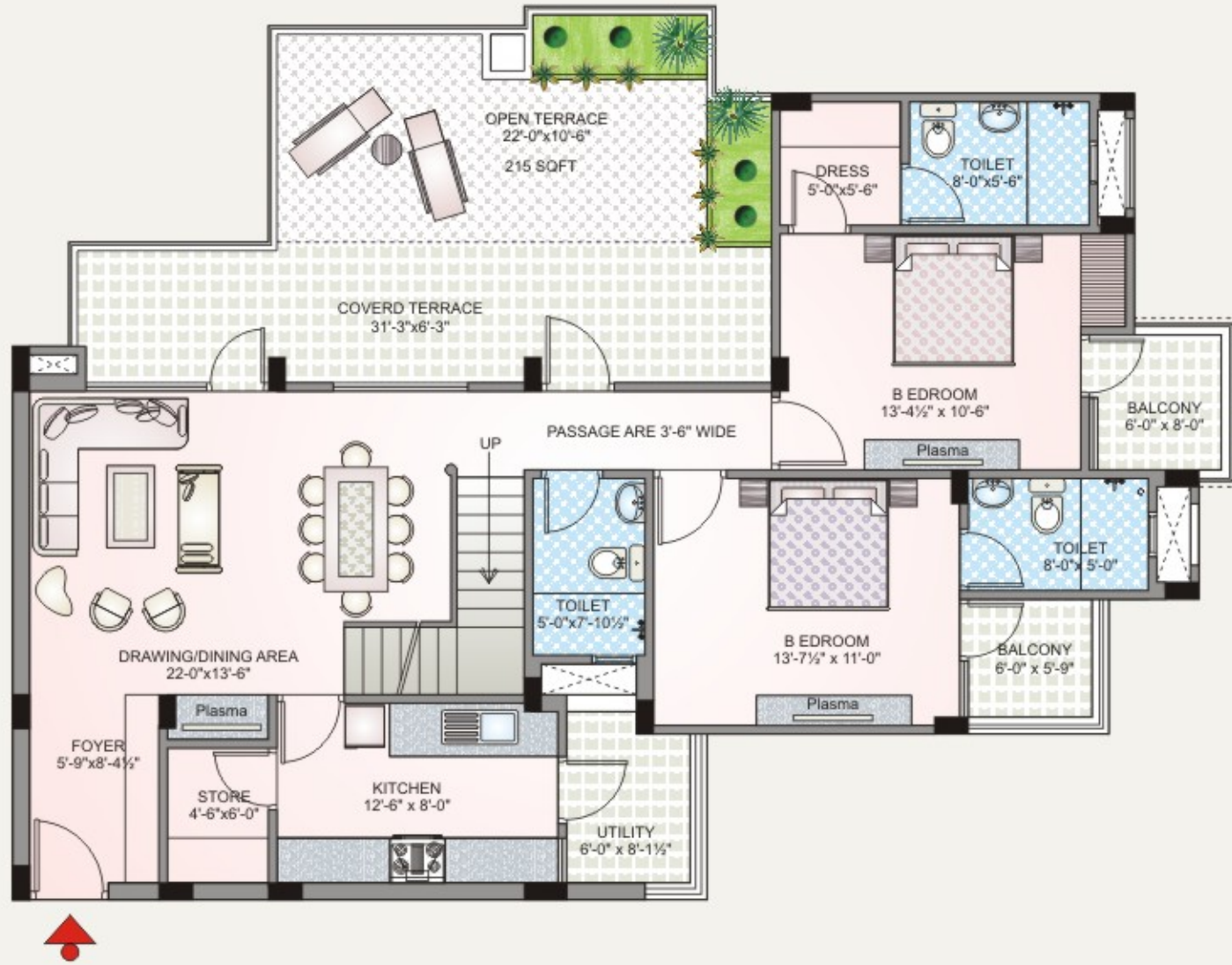
3 BHK Penthouse

*Intelligent design with
luxury and elegance...*

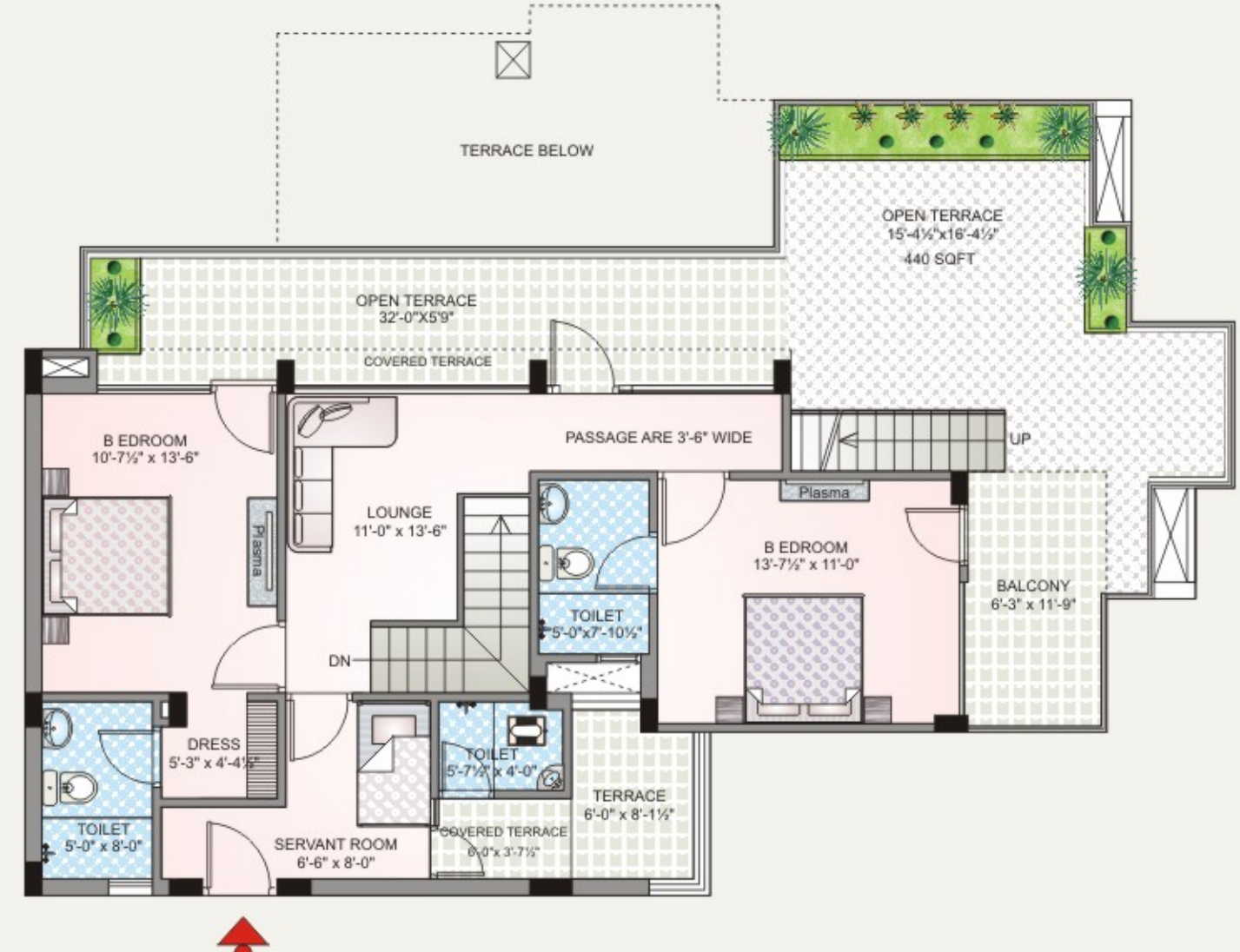


TYPE - A

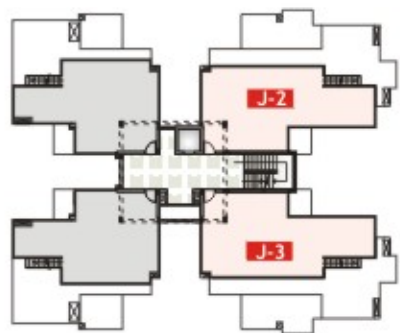
UNIT - 4 BHK PENT HOUSE



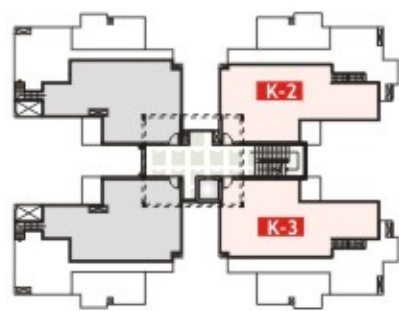
LOWER FLOOR PLAN



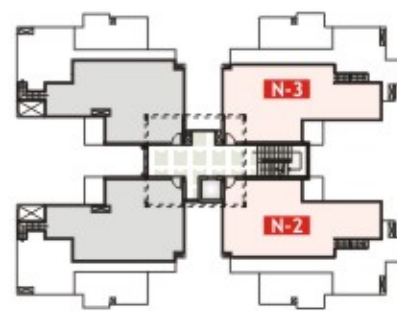
UPPER FLOOR PLAN



BLOCK - J



BLOCK - K

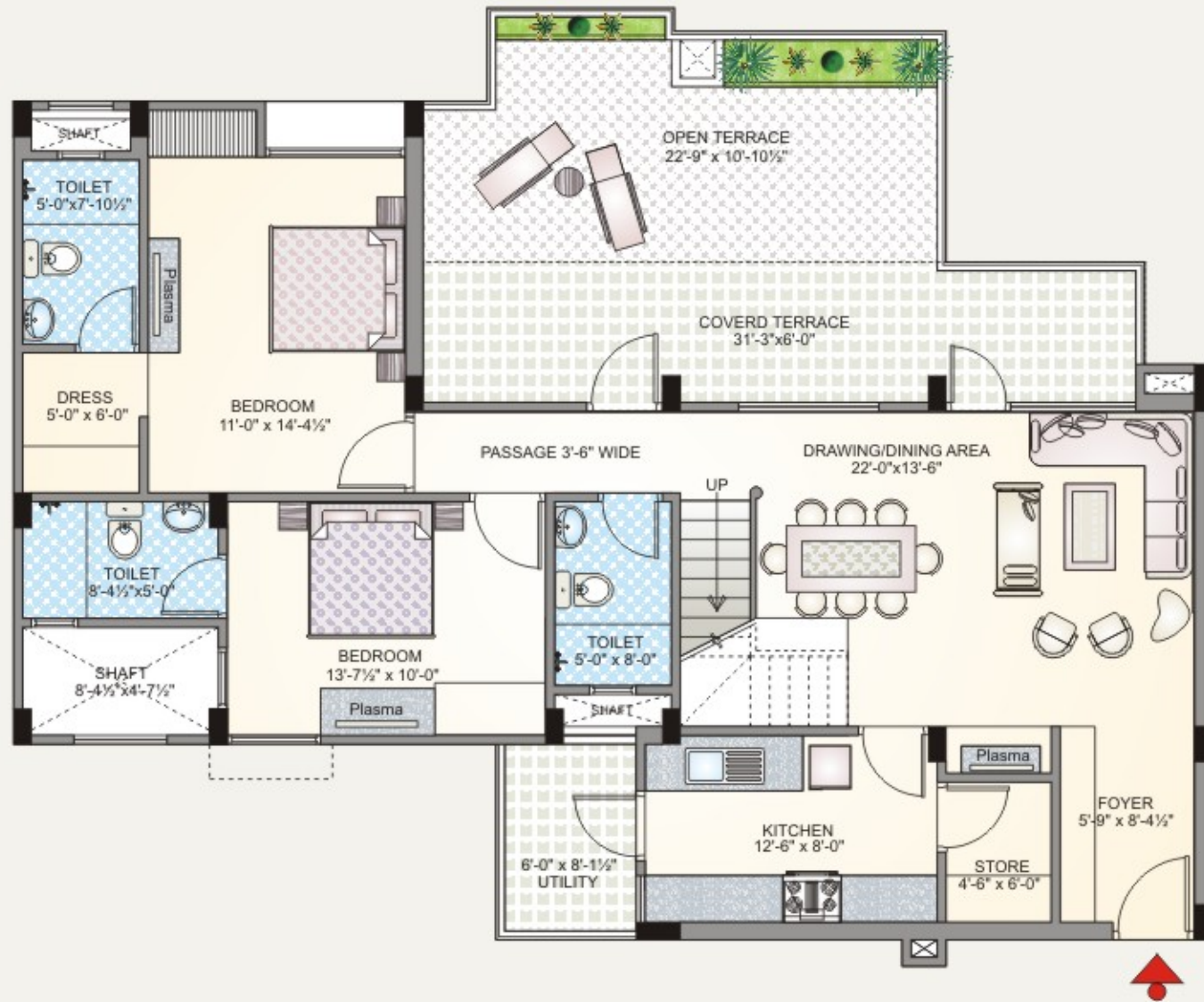


BLOCK - N

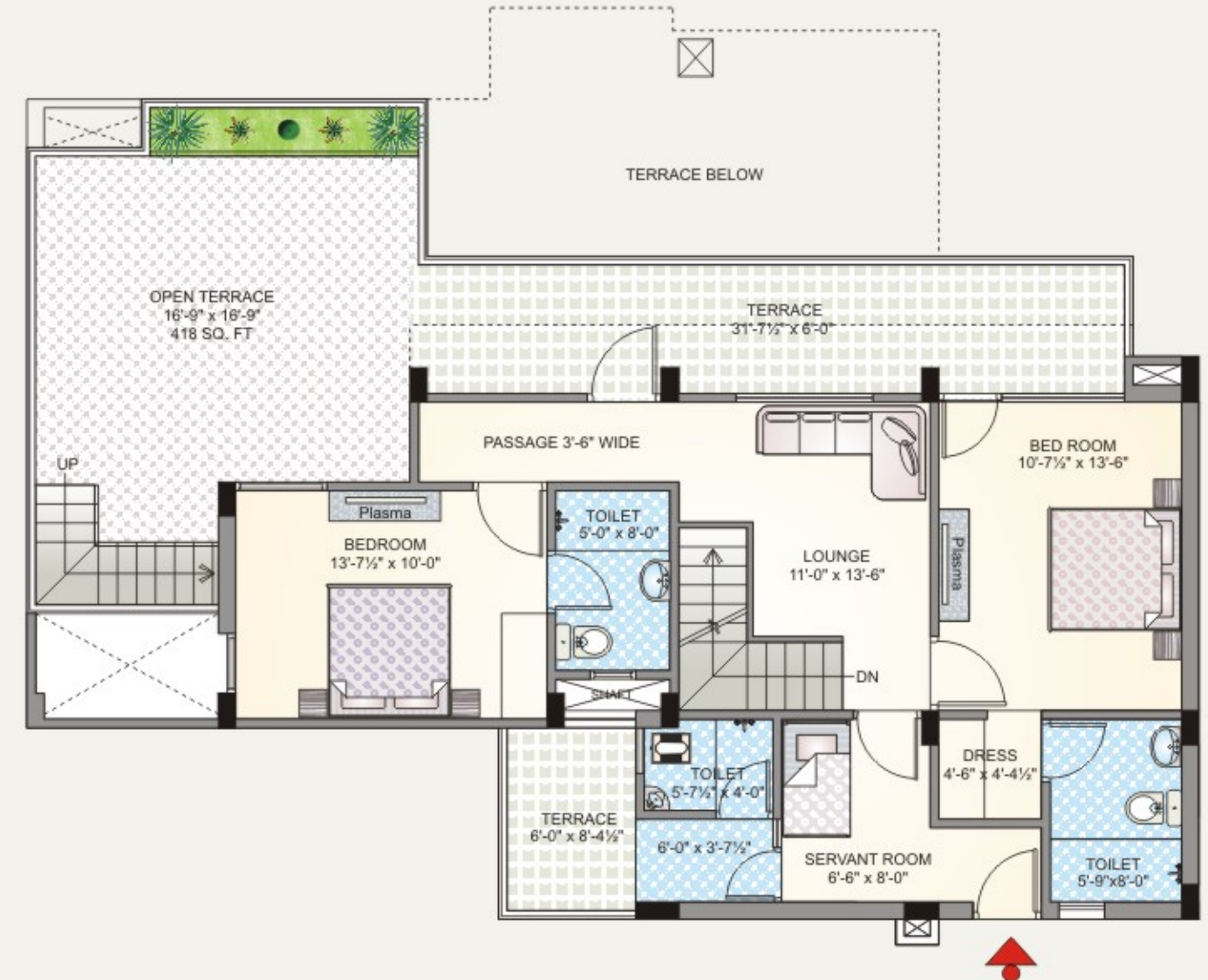
Area Chart	
BLOCK - J, K & N	
Lower Floor Plan	1535.00 sq.ft.
Upper Floor Plan	1185.33 sq.ft.
Terrace Floor Plan	313.66 sq.ft.
Total Built-up Area	3033.99 sq.ft.
Total Saleable Area	3792.48 sq.ft.

TYPE - B

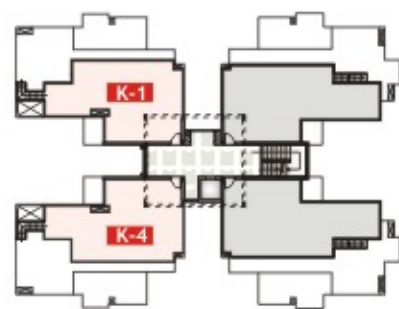
UNIT - 4 BHK PENT HOUSE



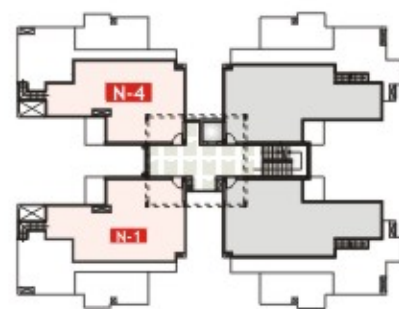
LOWER FLOOR PLAN



UPPER FLOOR PLAN



BLOCK - K

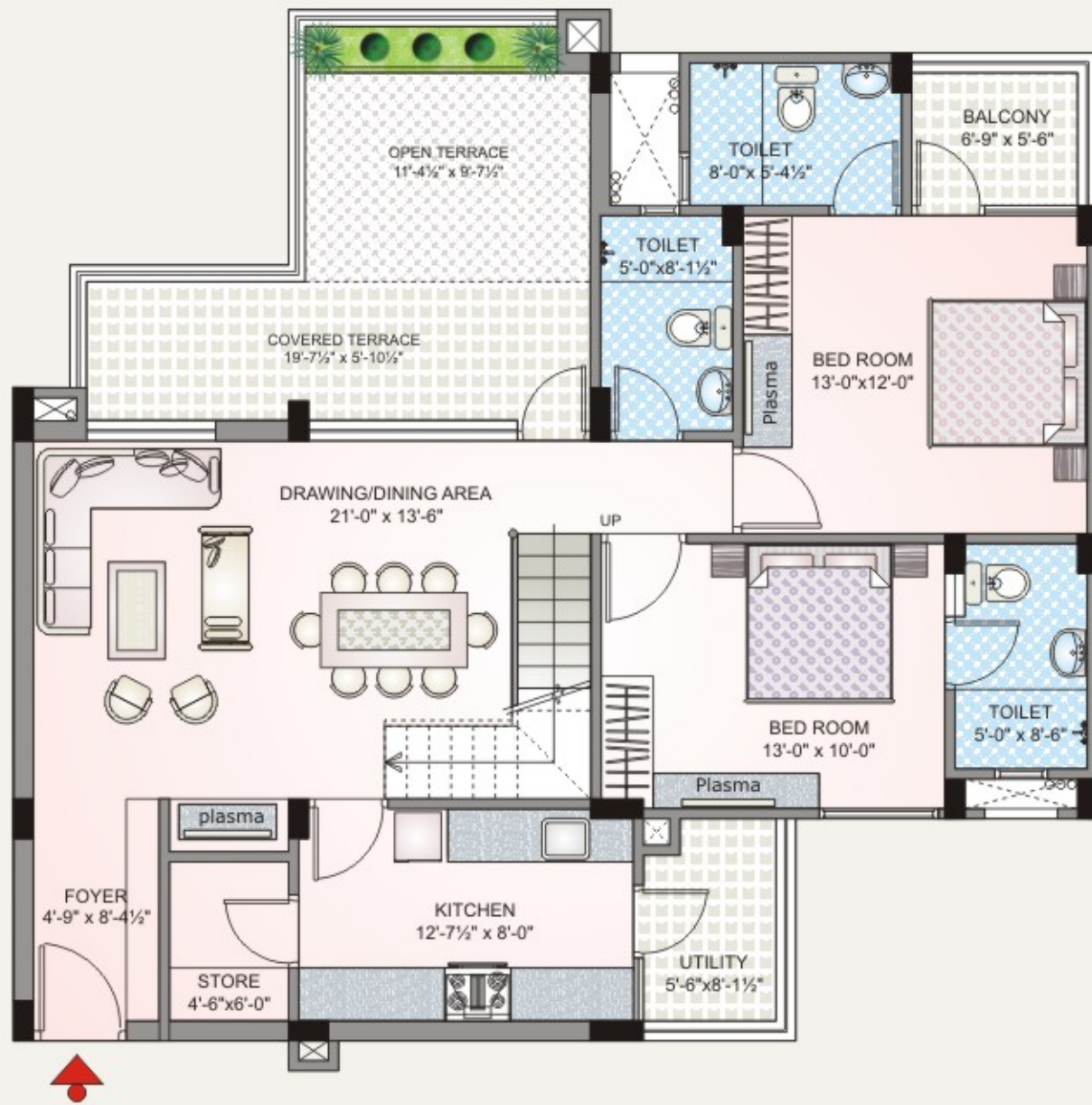


BLOCK - N

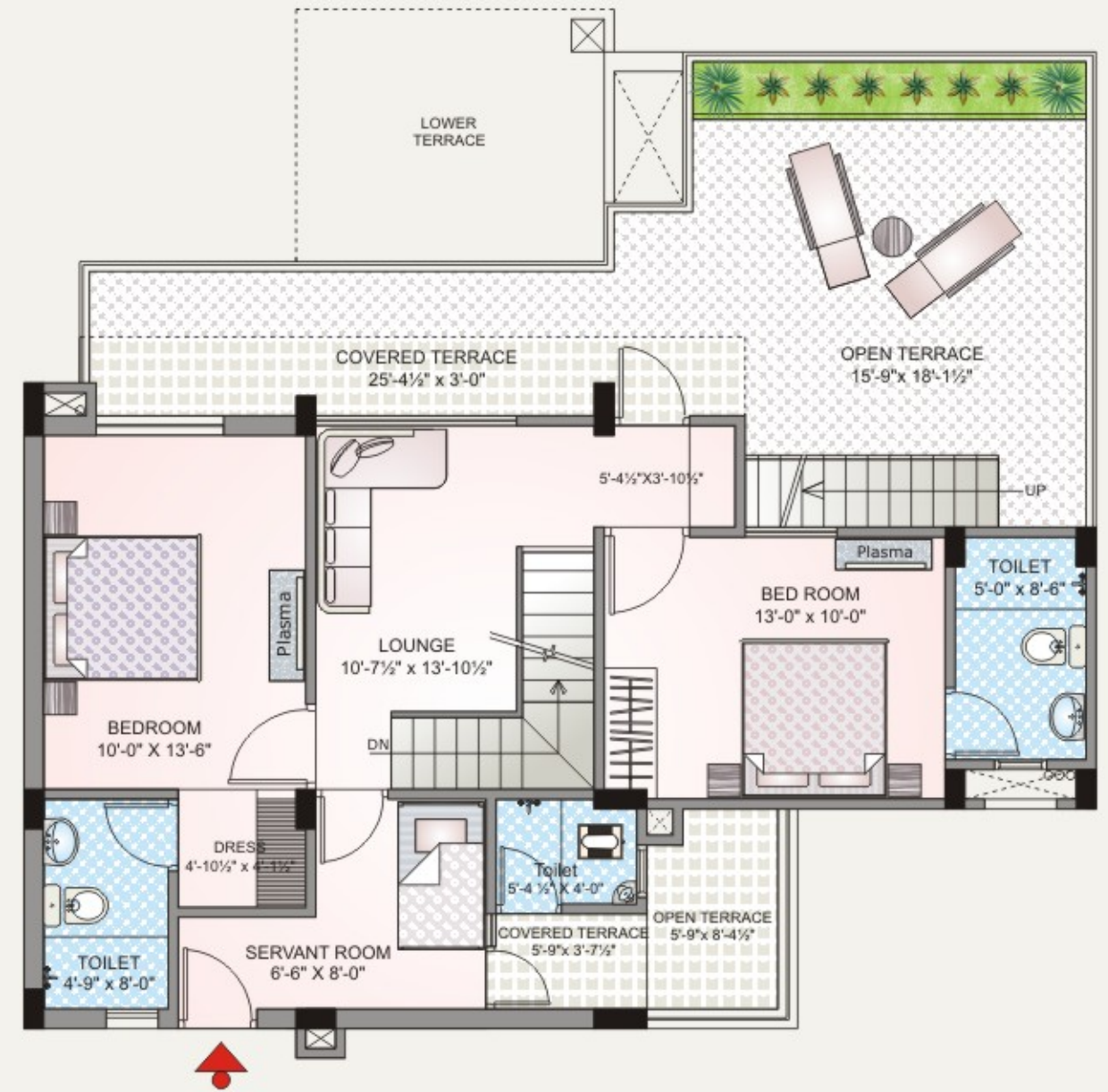
Area Chart	
BLOCK - K & N	
Lower Floor Plan	1458.00 sq.ft.
Upper Floor Plan	1125.00 sq.ft.
Terrace Floor Plan	299.00 sq.ft.
Total Built-up Area	2882.00 sq.ft.
Total Saleable Area	3602.50 sq.ft.

TYPE - C

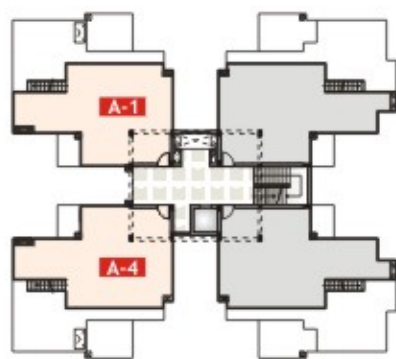
UNIT - 4 BHK PENT HOUSE



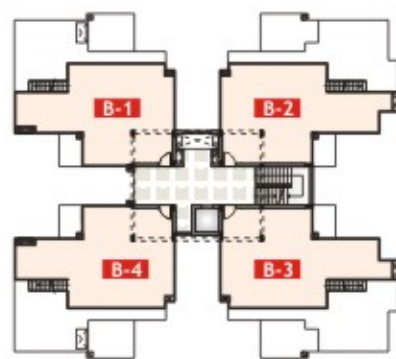
LOWER FLOOR PLAN



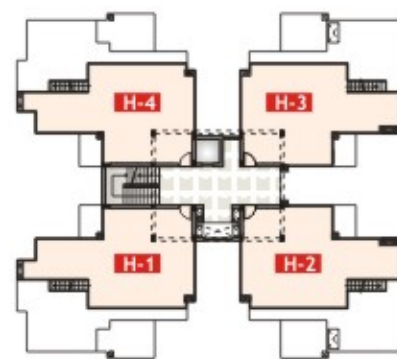
UPPER FLOOR PLAN



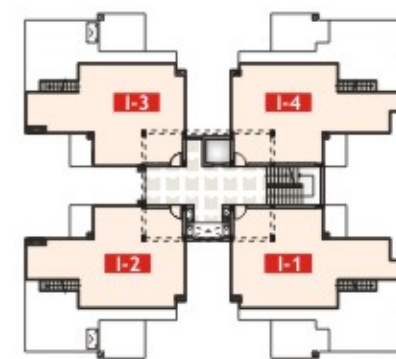
BLOCK - A



BLOCK - B



BLOCK - H



BLOCK - I

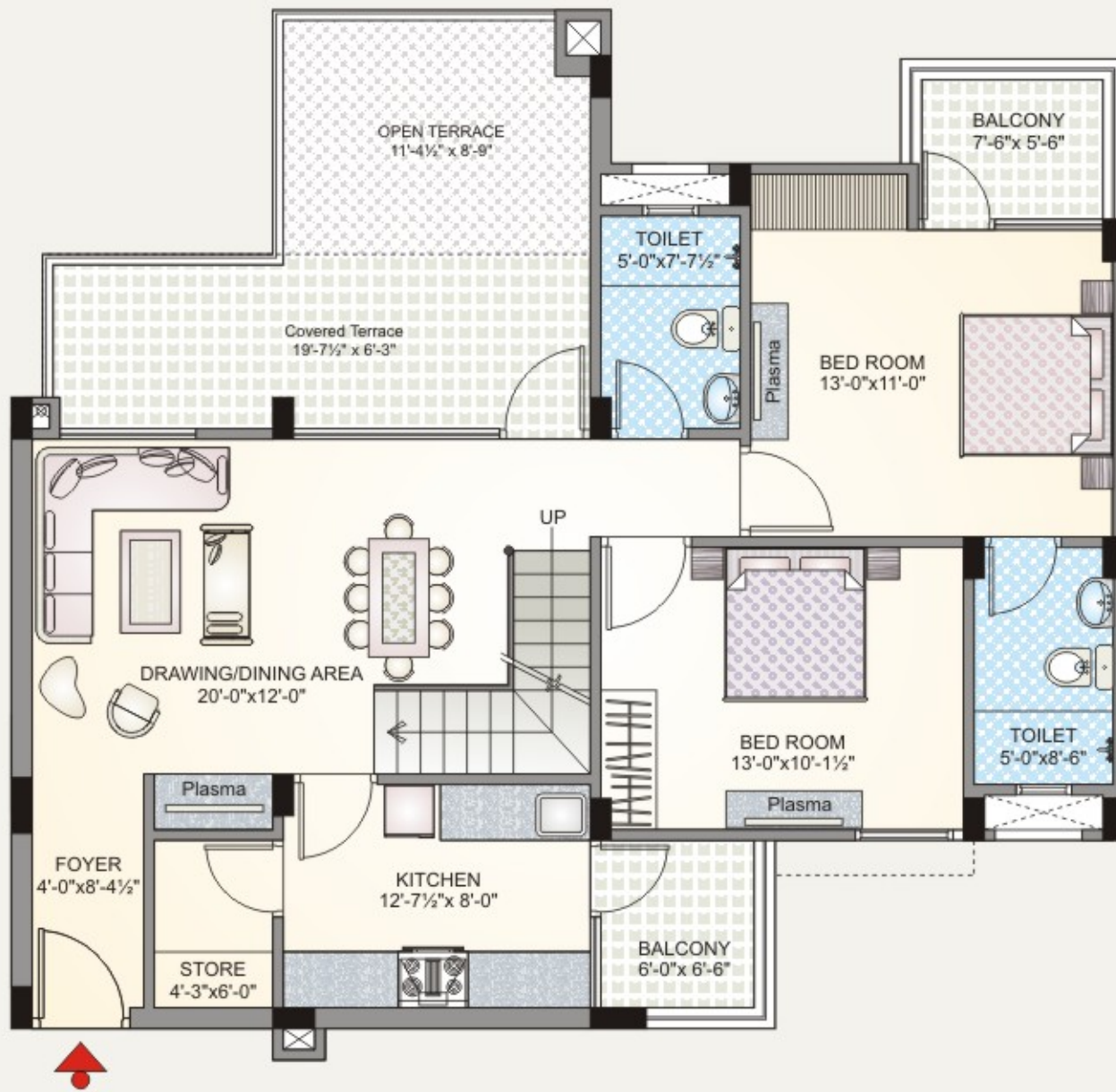


BLOCK - J

Area Chart	
BLOCK - A, B, H, I & J	
Lower Floor Plan	1267.00 sq.ft.
Upper Floor Plan	1018.50 sq.ft.
Terrace Floor Plan	268.66 sq.ft.
Total Built-up Area	2554.16 sq.ft.
Total Saleable Area	3192.70 sq.ft.

TYPE - D

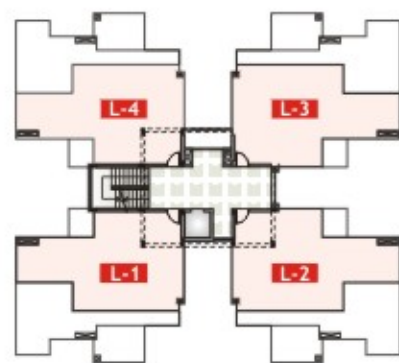
UNIT - 4 BHK PENT HOUSE



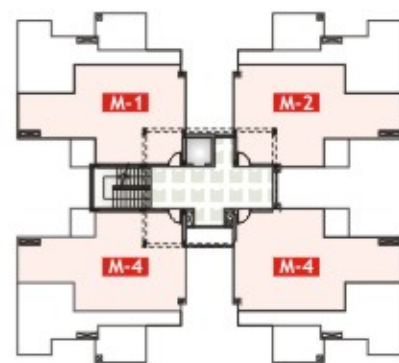
LOWER FLOOR PLAN



UPPER FLOOR PLAN



BLOCK - L

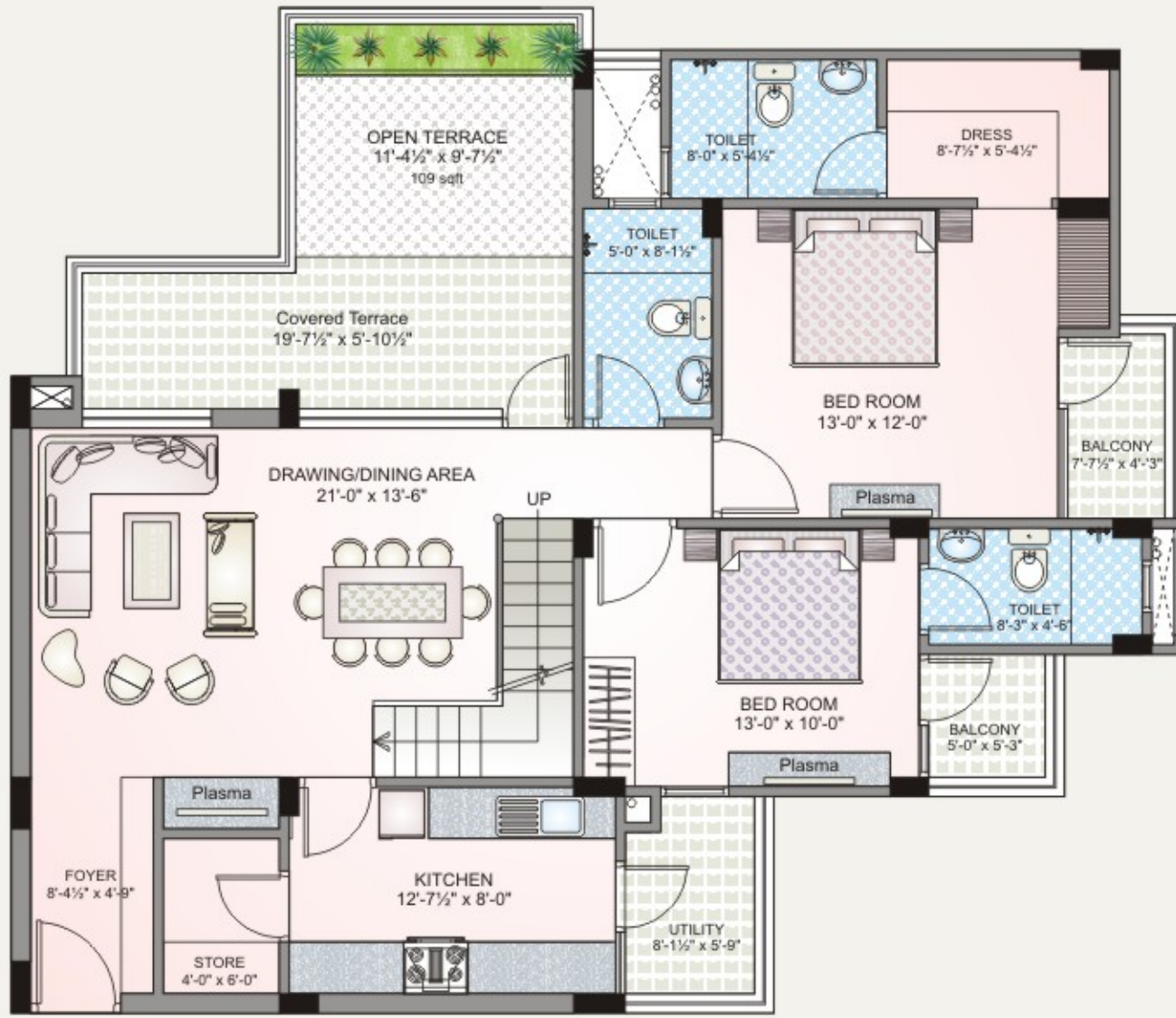


BLOCK - M

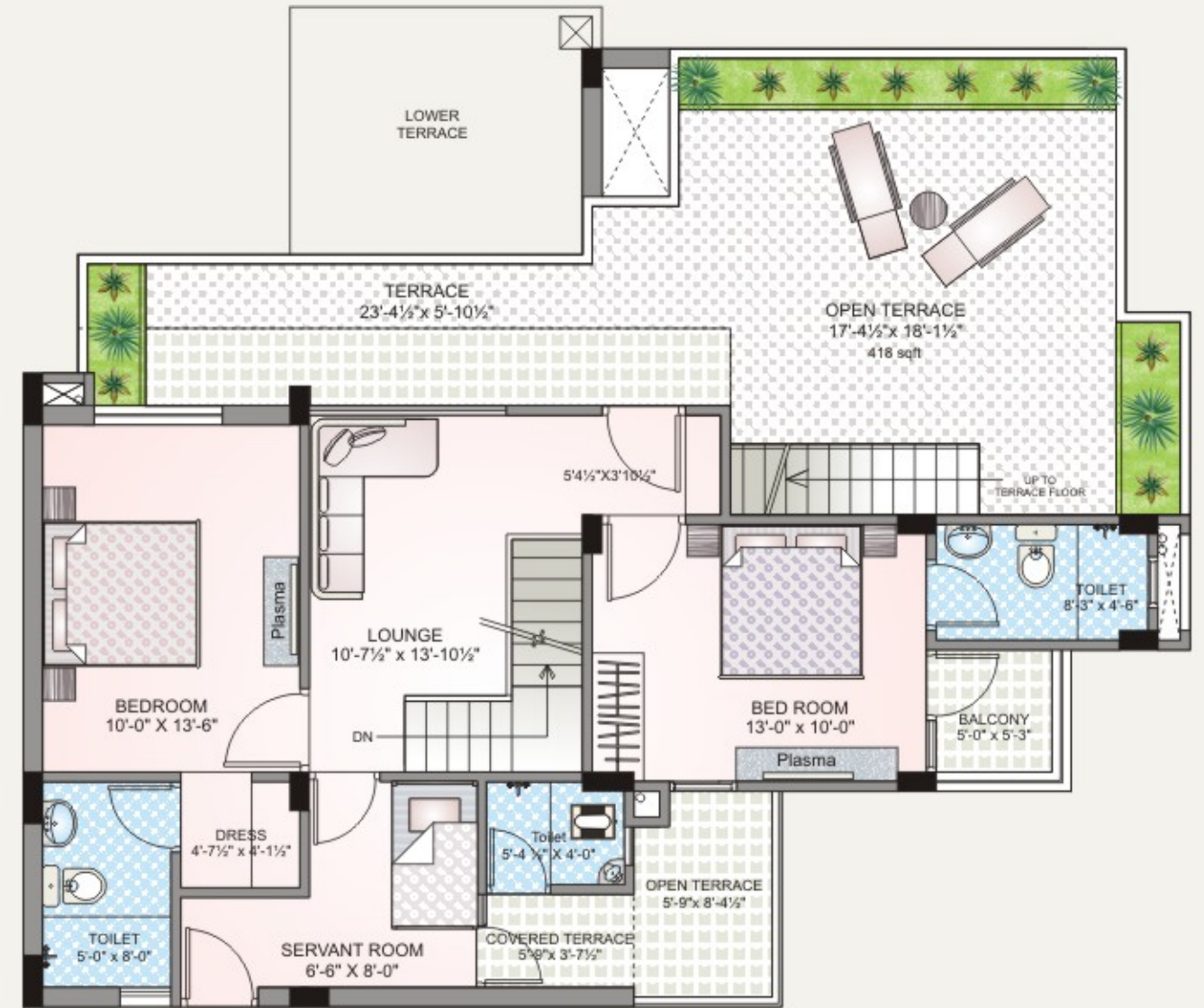
Area Chart	
BLOCK - L & M	
Lower Floor Plan	1141.50 sq. ft.
Upper Floor Plan	920.54 sq. ft.
Terrace Floor Plan	249.33 sq. ft.
Total Built-up Area	2311.37 sq. ft.
Total Saleable Area	2889.21 sq. ft.

TYPE - E

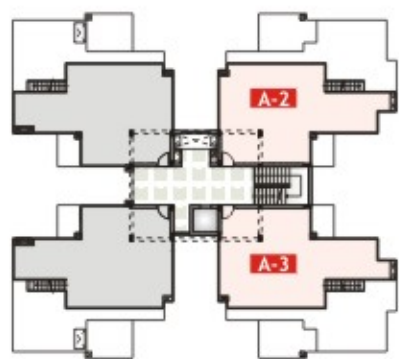
UNIT - 4 BHK PENT HOUSE



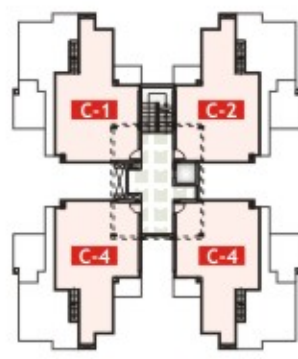
LOWER FLOOR PLAN



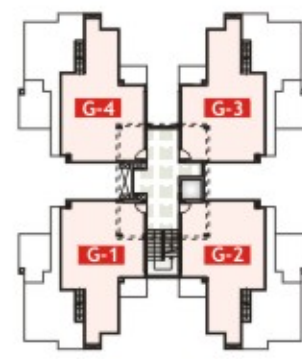
UPPER FLOOR PLAN



BLOCK - A



BLOCK - C

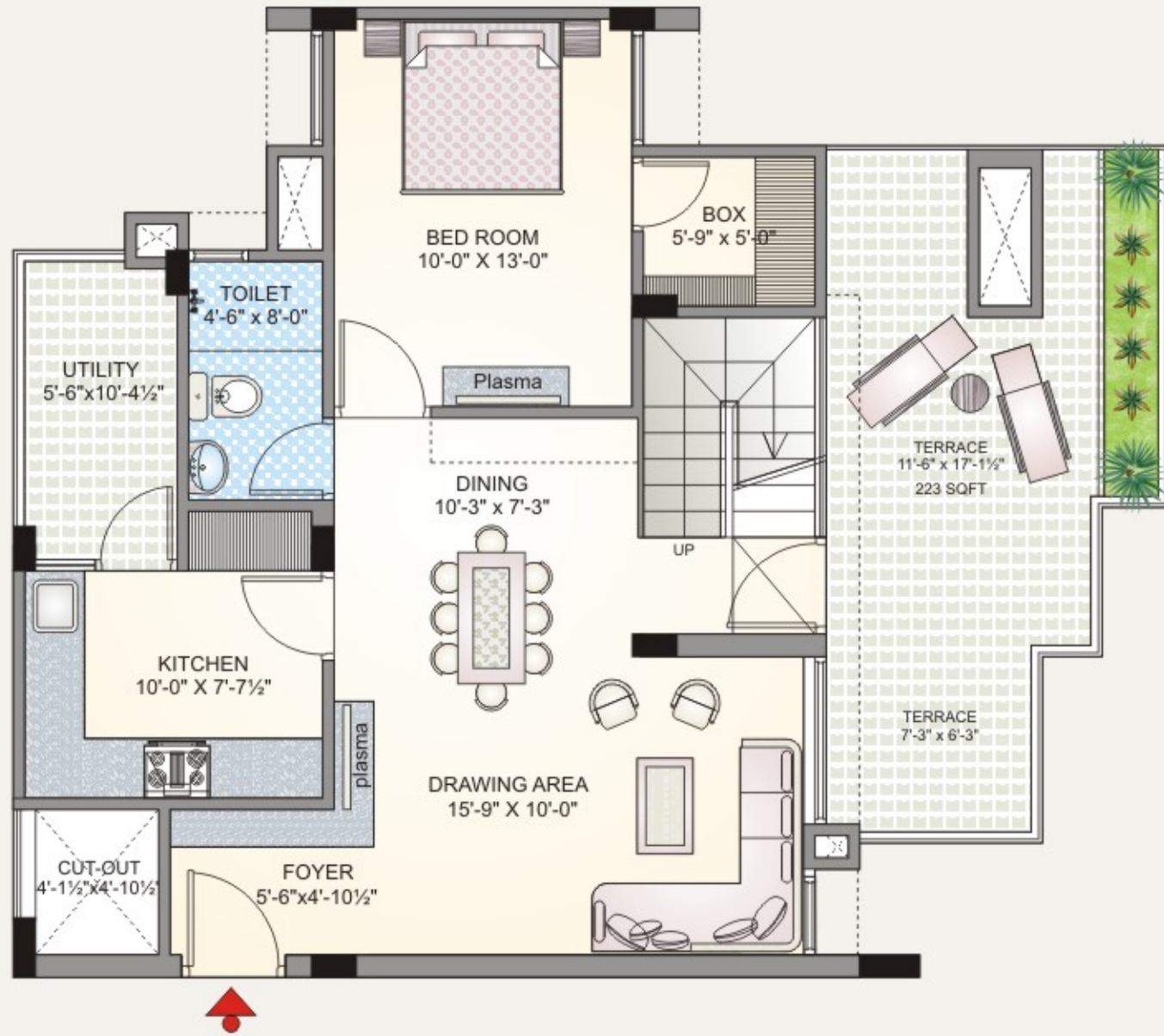


BLOCK - G

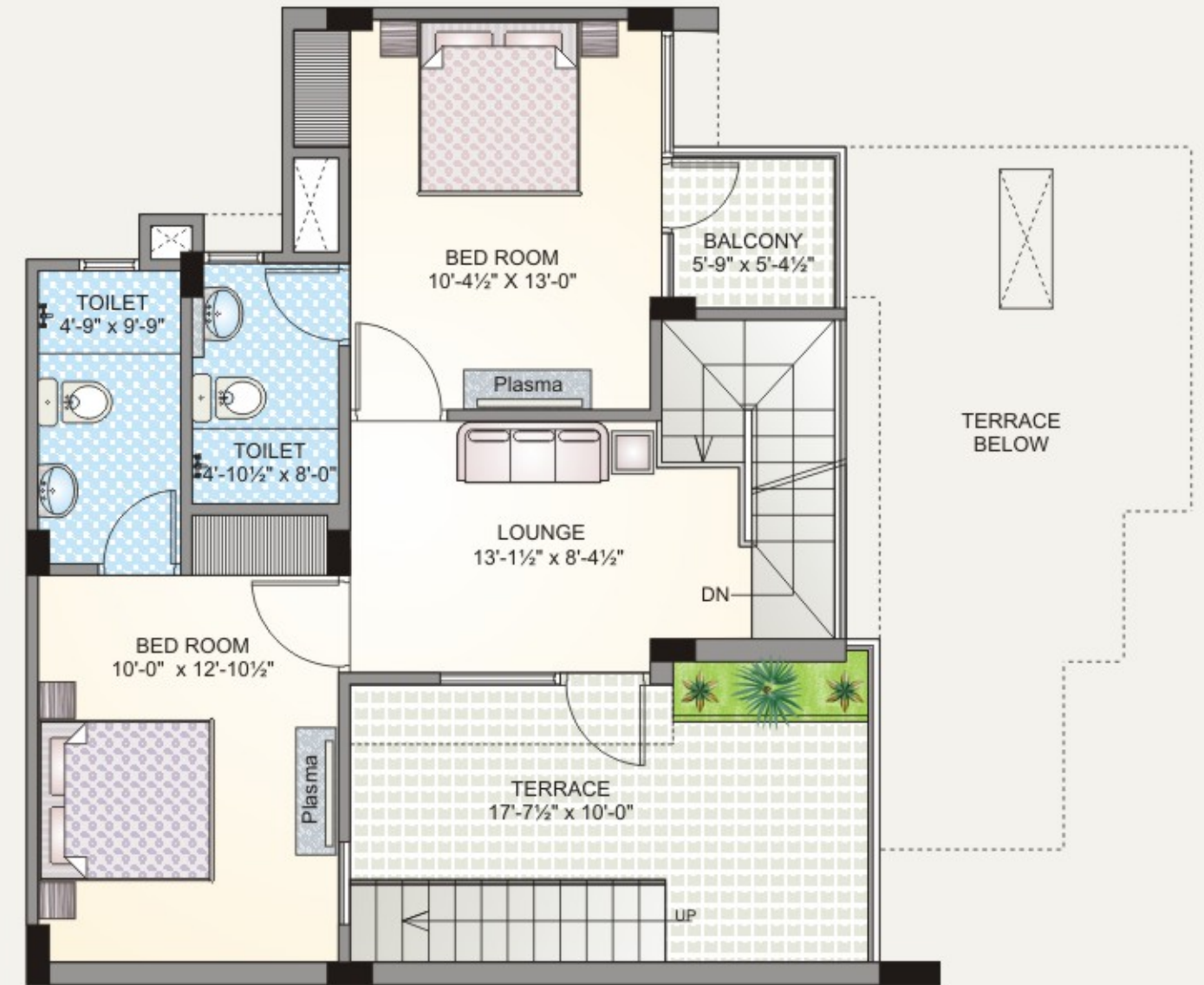
Area Chart	
BLOCK - A, C, & G	
Lower Floor Plan	1348.50 sq.ft.
Upper Floor Plan	1073.00 sq.ft.
Terrace Floor Plan	283.33 sq.ft.
Total Built-up Area	2704.83 sq.ft.
Total Saleable Area	3381.03 sq.ft.

TYPE - F

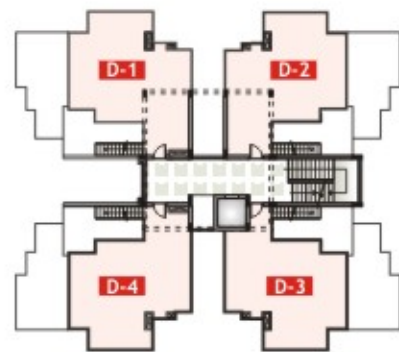
UNIT - 3 BHK PENT HOUSE



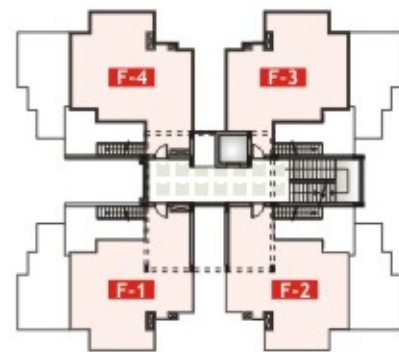
LOWER FLOOR PLAN



UPPER FLOOR PLAN



BLOCK - D



BLOCK - F

Area Chart	
BLOCK - D & F	
Lower Floor Plan	861.50 sq. ft.
Upper Floor Plan	701.00 sq. ft.
Terrace Floor Plan	212.33 sq. ft.
Total Built-up Area	1774.83 sq. ft.
Total Saleable Area	2218.53 sq. ft.



Proposed Villas Block Colour Chart

- Plot Area - 28' x 65'
(Plot No. 12 to 26)
- Plot Area - 32' x 75'
(Plot No.1 to 11)



Proposed Penthouses Block Colour Chart

- 2 BHK (Type - 1) - Block D & F
- 2 BHK (Type - 2) - Block E
- 3 BHK (Type - 1) - Block A, B, H, I, & J
- 3 BHK (Type - 2) - Block L & M
- 3 BHK (Type - 3) - Block C & G
- 4 BHK (Type - 1) - Block A, J, K & N
- 4 BHK (Type - 2) - Block N & K

Legend

- | | |
|------------------------|---|
| 1. Access Road | 12. Play Court and Kids Play Area |
| 2. Entrance Plaza | 13. Central Spine with Old Age People Corner, Acupressure path, Exercise Area |
| 3. Side Walk | 14. Rose Garden |
| 4. Retail | 15. Basket Ball Court |
| 5. Temple | 16. Multipurpose Lawn |
| 6. Sculpture Court | 17. Jogging Track |
| 7. Club | 18. Loop Walk |
| 8. Swimming Pool | 19. Parking |
| 9. Interactive Seating | 20. Peripheral Road |
| 10. Wooden Trellis | |
| 11. Seating Area | |

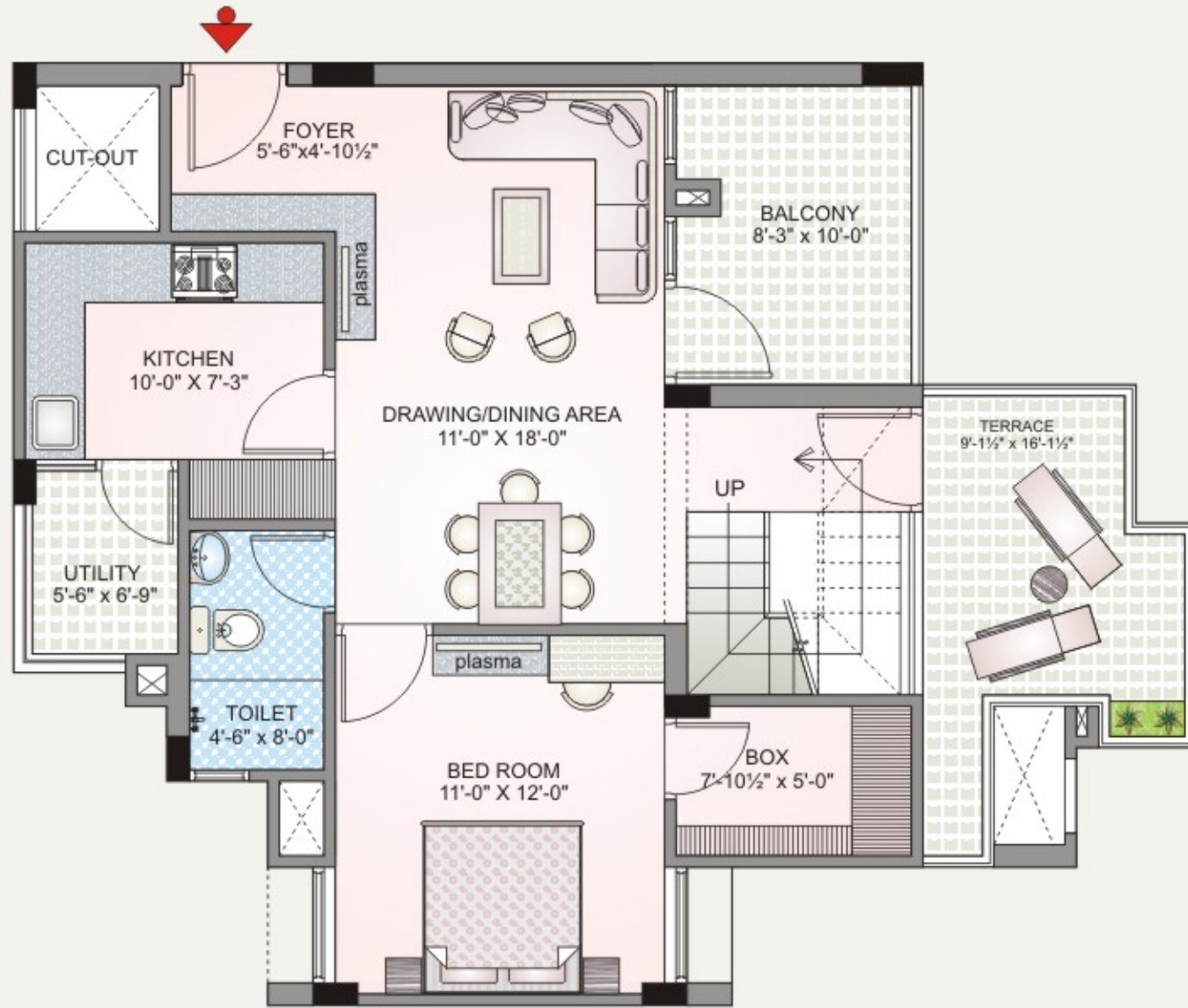
Location Advantages

- Distance From Major Cities
- Pushker - 11 kms.
 - Kishangarh - 20 kms.
 - Beawar - 52 kms.
 - Makrana - 65 kms.
 - Jaipur - 110 kms.
- Distance From Major Location
- University Campus - 2.5 kms.
 - Ajmer Bus Stand - 7.0 kms.
 - Railway Station - 8.5 kms.
 - Khwaja Sahab Dargah - 9.0 kms.

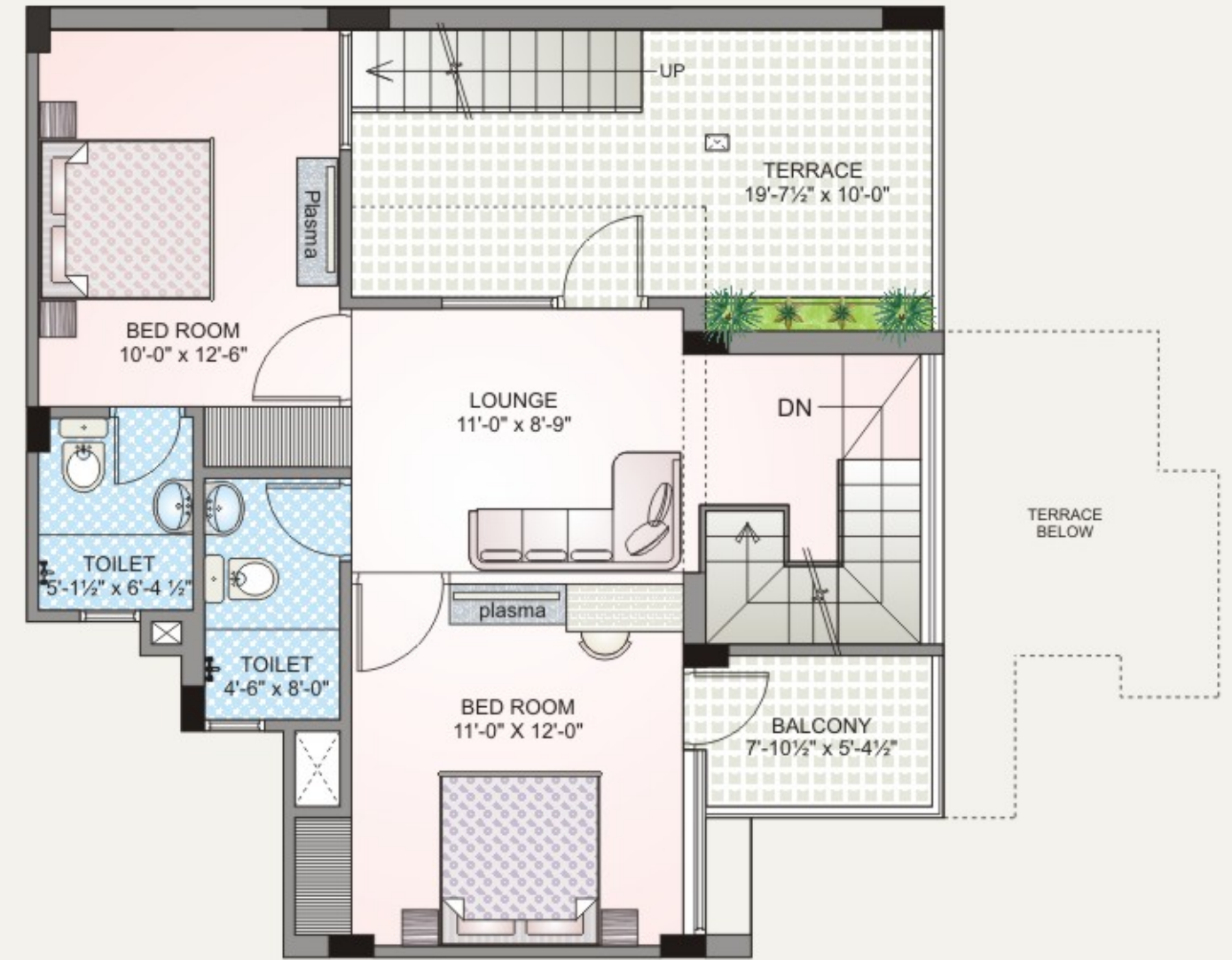


Rosewood
villas & penthouses

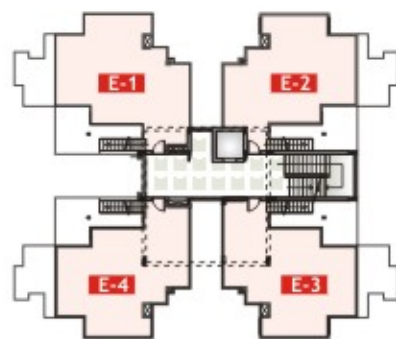




LOWER FLOOR PLAN



UPPER FLOOR PLAN

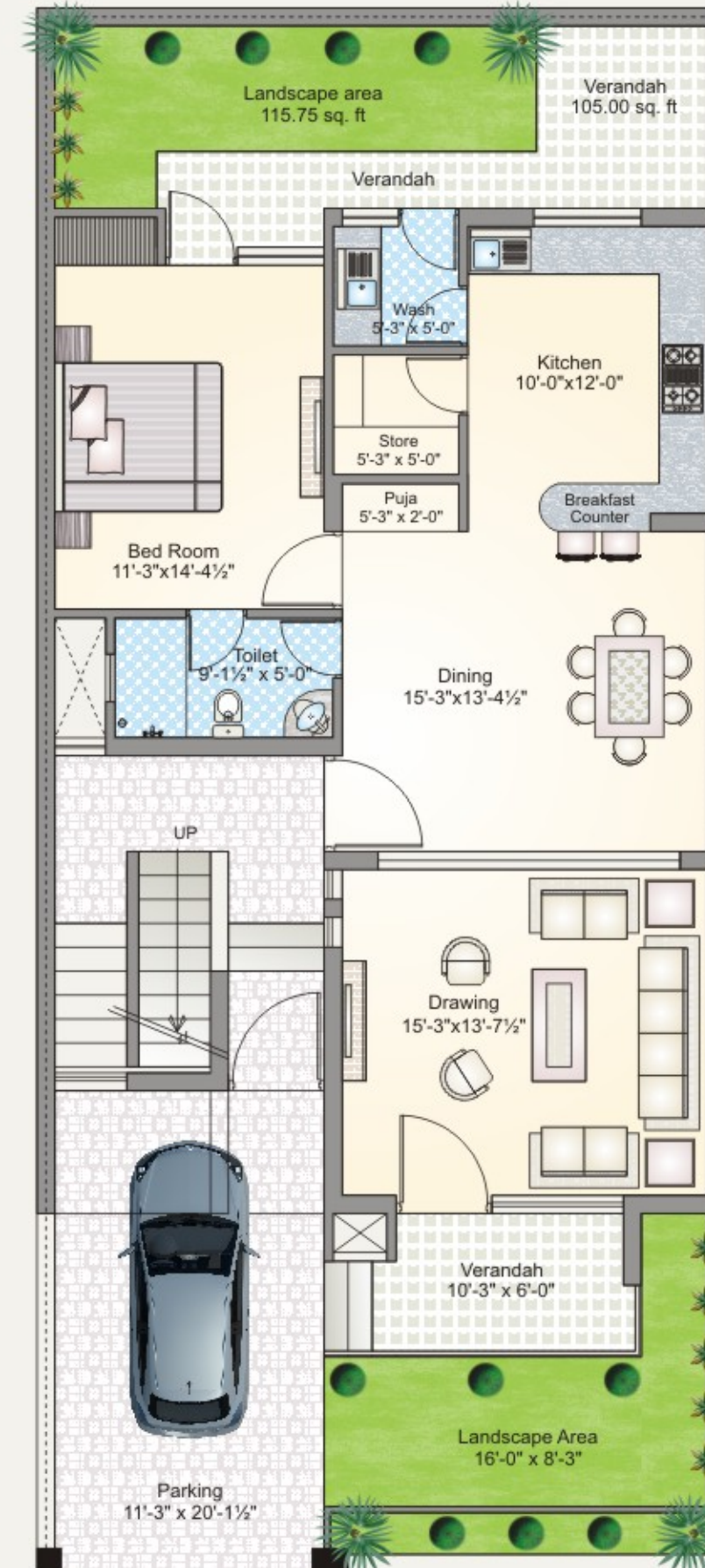


BLOCK - E

Area Chart	
BLOCK - E	
Lower Floor Plan	853.00 sq. ft.
Upper Floor Plan	745.25 sq. ft.
Terrace Floor Plan	222.00 sq. ft.
Total Built-up Area	1820.25 sq. ft.
Total Saleable Area	2275.31 sq. ft.

The Rosewood Villas

Enjoy the luxury of your own freestanding villa. Enjoy the privacy you desire in addition to the security. A private parking bay, spacious balconies terrace with unmatched finished set these homes a class apart. Elegantly designed and aesthetically appealing, each villa promises to leave you pleasantly inspired.

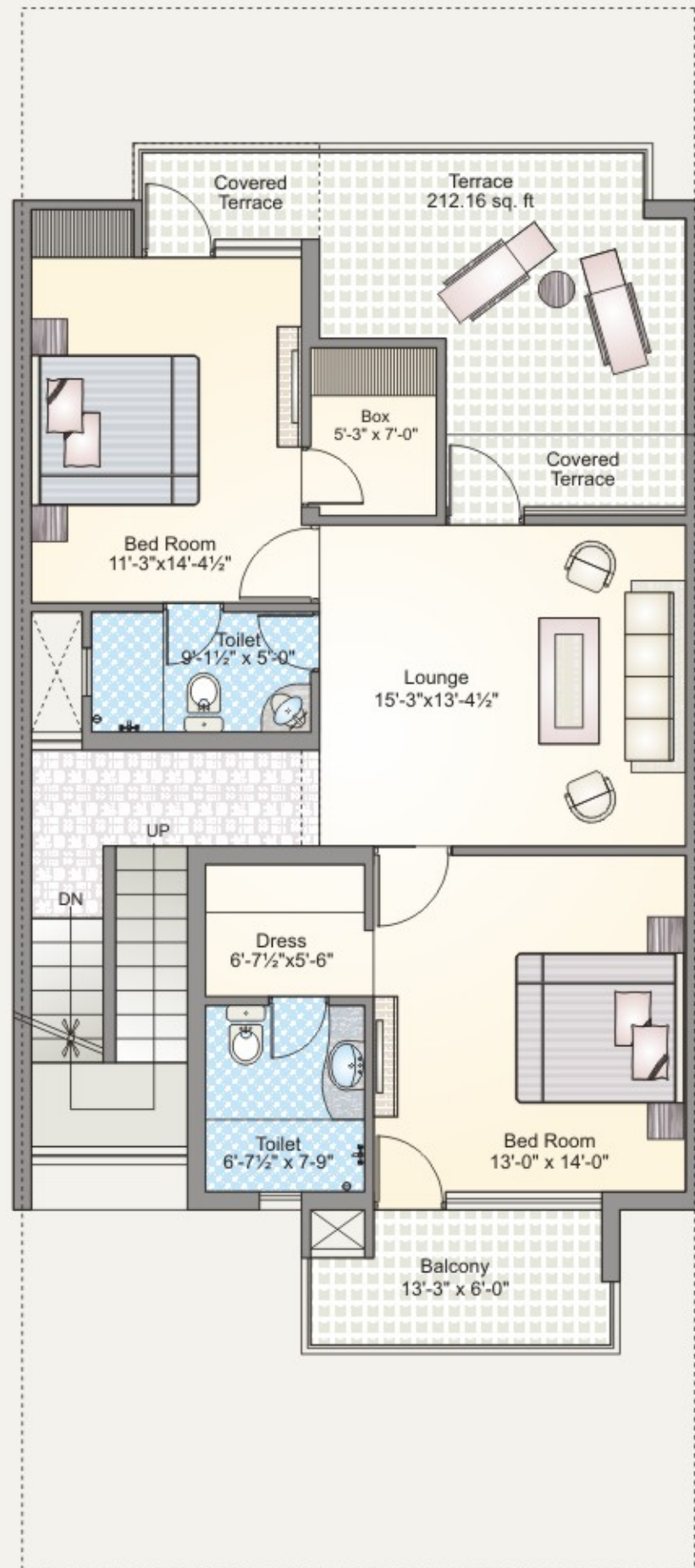


Area Chart

Ground Floor Plan	1292.73 sq.ft.
First Floor Plan	1128.29 sq.ft.
Second Floor Plan	298.00 sq.ft.
Total Built-up Area	2719.00 sq.ft.
Total Saleable Area	3262.80 sq.ft.

TYPE - A

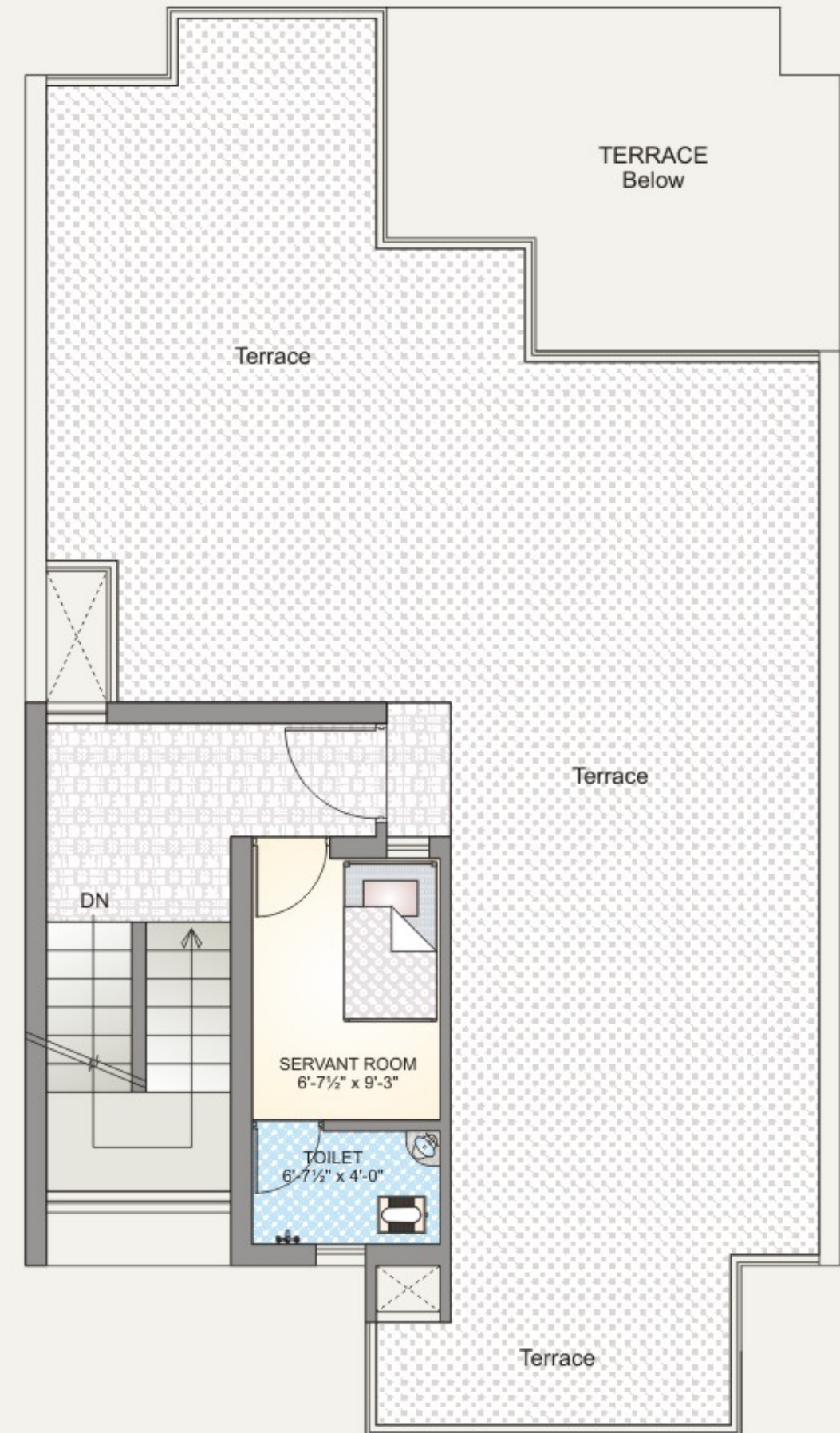
VILLA SIZE : 28' x 65'
(202.22 sq.yd.)



 FIRST FLOOR PLAN

TYPE - A

VILLA PLOT SIZE : 28' x 65'
(202.22 sq.yd.)



 SECOND FLOOR PLAN



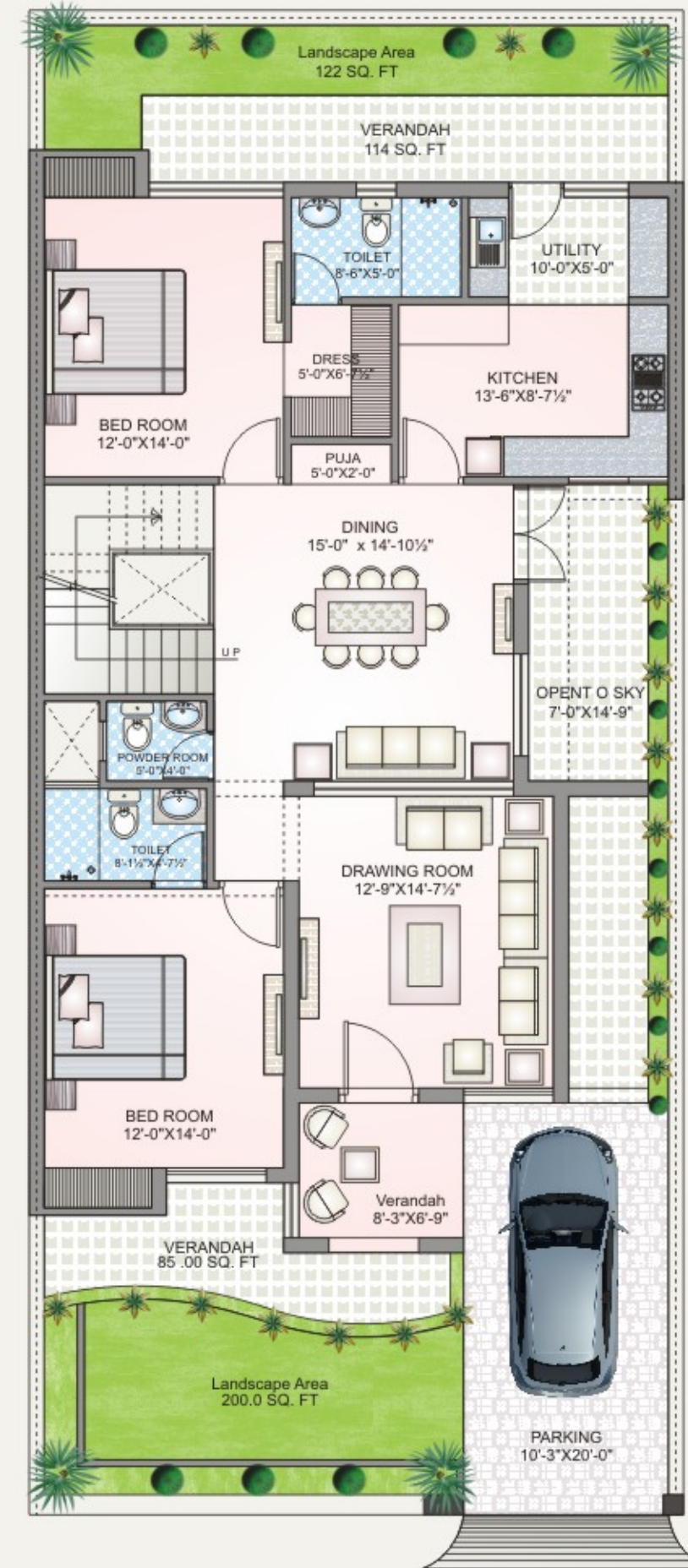
Interpretation of your dreams...



Villa Plot Size : 32' X 75'

TYPE - B

VILLA PLOT SIZE : 32' x 75'
(266.66 sq.yd.)



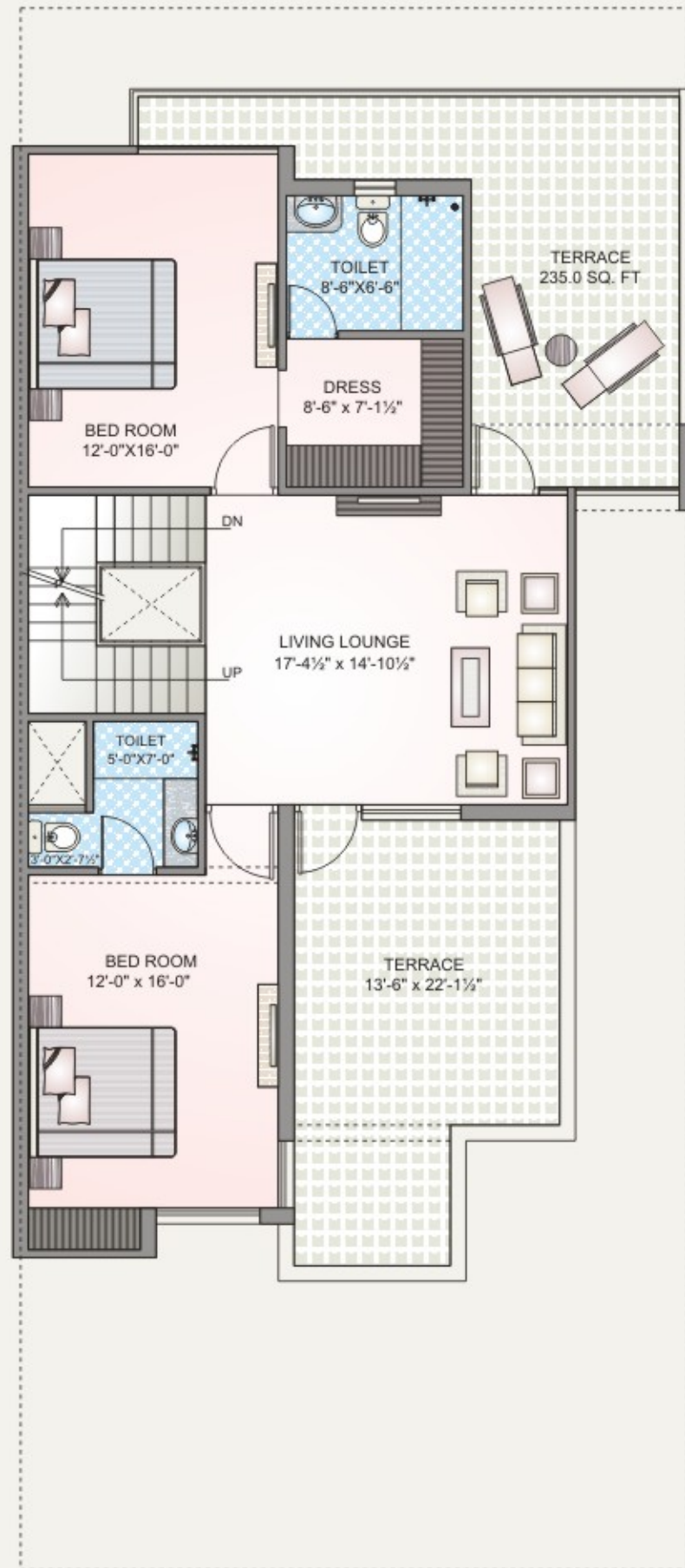
Area Chart

Ground Floor Plan	1585.00 sq.ft.
First Floor Plan	1127.00 sq.ft.
Second Floor Plan	290.00 sq.ft.
Total Built-up Area	3002.00 sq.ft.
Total Saleable Area	3602.40 sq.ft.

GROUND FLOOR PLAN

TYPE - B

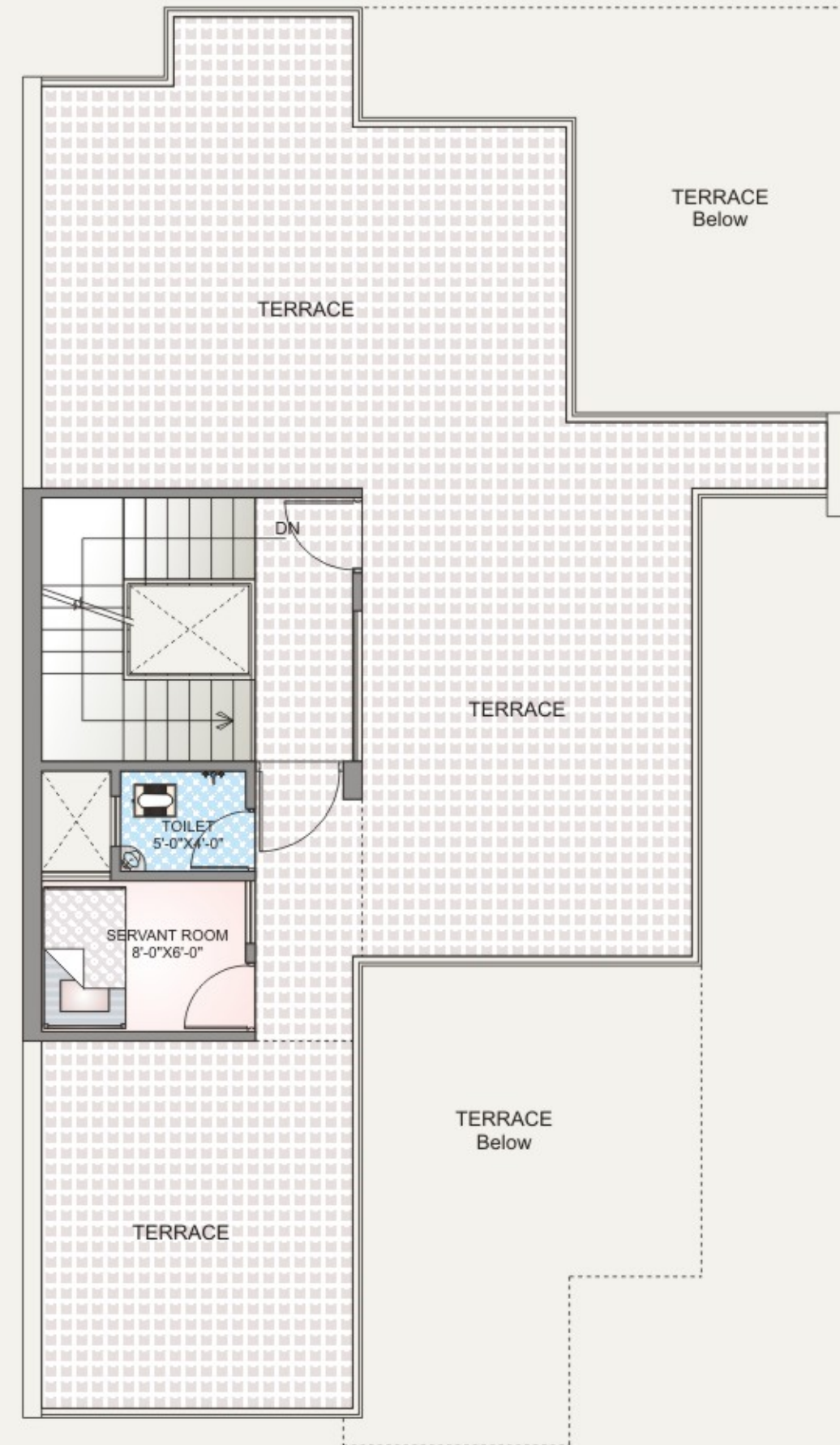
VILLA PLOT SIZE : 32' x 75'
(266.66 sq.yd.)



 FIRST FLOOR PLAN

TYPE - B

VILLA PLOT SIZE : 32' x 75'
(266.66 sq.yd.)



 SECOND FLOOR PLAN

Life Living Facilities



Club House Reception



Peaceful Library



Billiards Room



Cafeteria



Fully equipped Gym



Swimming Pool



Multipurpose Party hall

*U*nmatched facilities, fun and happiness is for you to explore

Rosewood
— villas & penthouses —

The CLUB HOUSE



The imposing blocks of apartments will have a clubhouse built in! Just step down to the grounds and the club lays out its array of facilities. Make a merry splash in the pool, keep slim at the well-equipped gym, or just succumb to the delicacies at the attached restaurant. There are plenty of outdoor spaces and indoor games options for sports-lovers. Of course, there will be so much for the children to do that they won't complain of a single wasted moment. Walk, run or just have a conversation with Mother Nature.

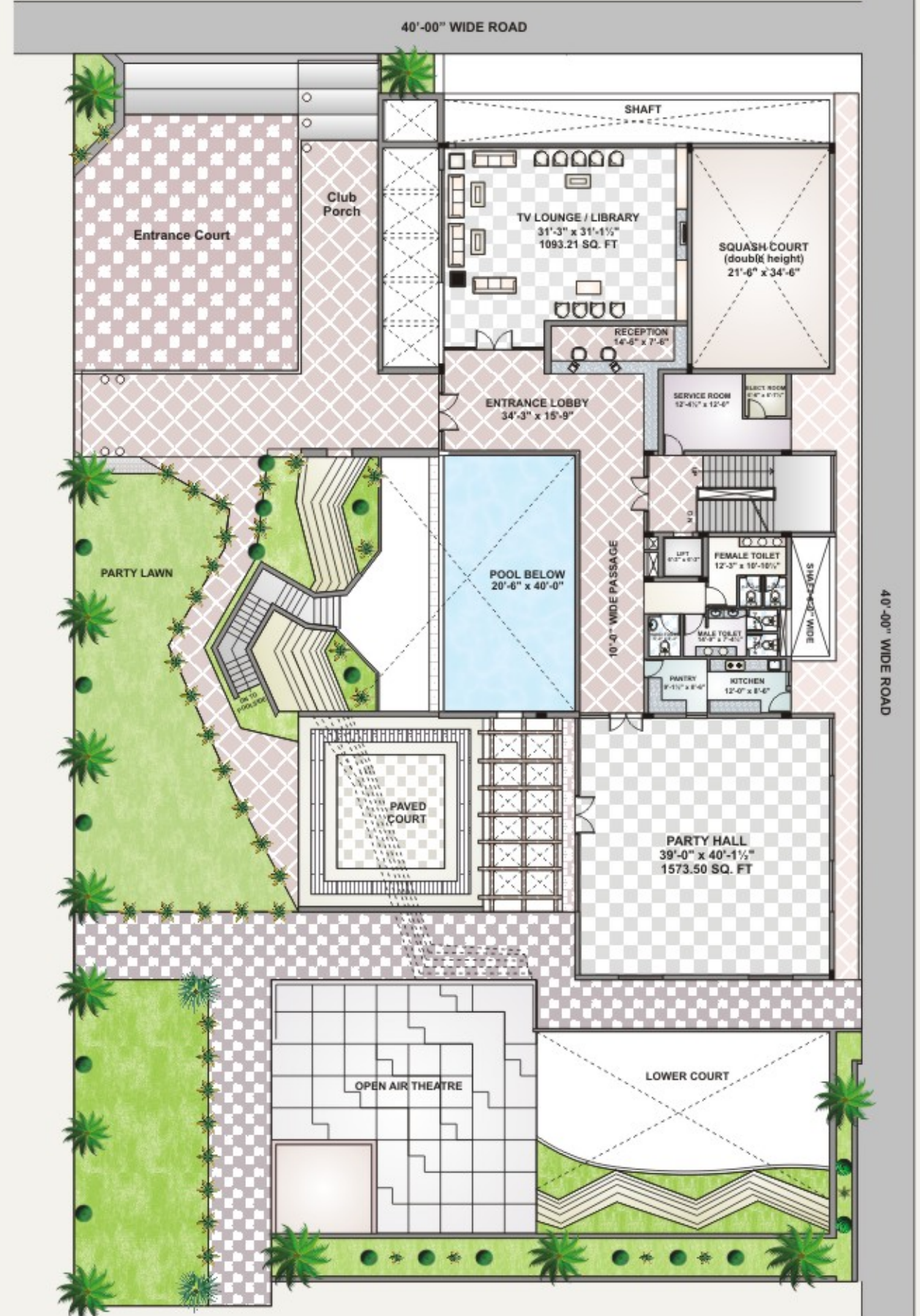
CLUB HOUSE

BASEMENT FLOOR PLAN



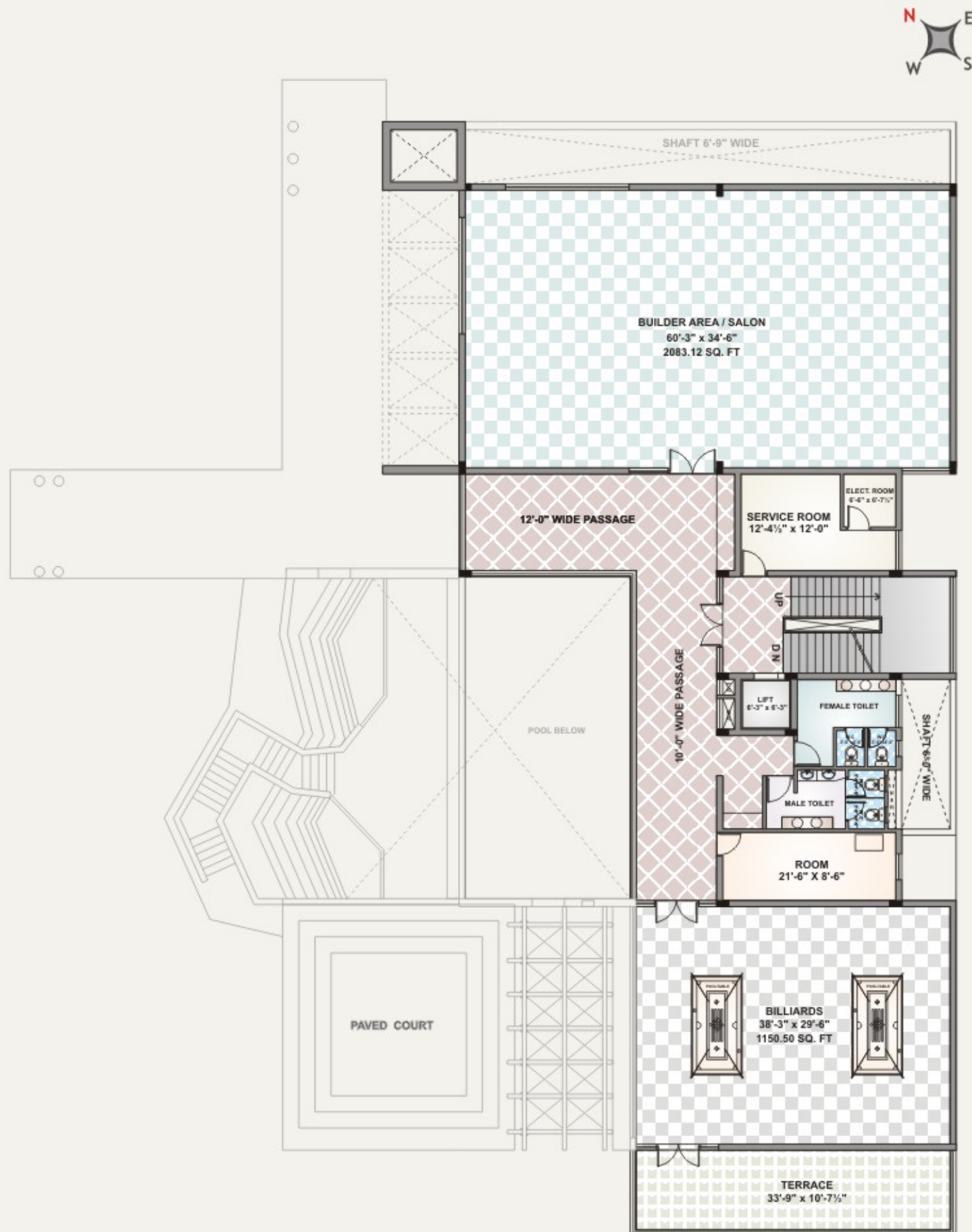
CLUB HOUSE

GROUND FLOOR PLAN



CLUB HOUSE

FIRST FLOOR PLAN



Villa specifications:

Ground Floor

- Living, Dining, Passage, both bed rooms – Italian / imported marble.
- Kitchen – Good quality Granite or imported marble.
- Staircase Riser and Treads – Designer glass railing with Italian / imported marble / Natural wood.
- Door and window – wooden with melamine polish and veneer.
- Clear floor height from finished floor to bottom of slab – 11'-0".
- lintle height – 8'-0".

First Floor

- Master bed room – Laminated wooden flooring.
- Passage and other bed room – Imported marble flooring.

Interior work

- Modular kitchen.
- False ceiling for all suitable areas.
- Wardrobe for all bed rooms.
- Painting with P.O.P punning.

White Goods

- Refrigerator.
- LCD TV for all bed rooms and living room.
- Air conditioner for all bed rooms, drawing and living room.
- Door video phone.
- EPBX – Intercom facility for all rooms.
- Fan and Light fixtures for all rooms.





the GROUP

The Group was established in 1989 and since then successive projects continued to take the brand ARG to unscalable heights. Today, ARG is one of the most trusted brand in the Real Estate Industry.

Since then it has been endeavor for the group to provide modern and moderate housing & commercial spaces for cozy and comfortable living. Project after project, ARG Group has upgraded the design, lay out, provision for amenities and facilities and has commensurated with the changing lifestyle and on going needs of their valued customers. Mr. Atma Ram Gupta, Chairman of the group, focuses on delivering what the consumer wants every time!

Shri Atma Ram Gupta, a Chartered and cost Accountant, is the backbone of the ARG Group. His dedication for the group has given amazing heights to ARG Group and wide acceptance amongst the buyers, retailers and investors.

Shri Atma Ram Gupta is President of Federation of Rajasthan Trade and Industries (FORTI) and associated with Lions Club, Rotary Club, Rajasthan Swasthya Yog Parishad Trust Jaipur, Akhil Bharatiya Vaishaya Sammelan and so on.

“ the most important thing for a business is **happy and healthy relationship** with the clients...” ”

ONGOING PROJECTS



ARG PURAM, Agra Road Jaipur



North Avenue, Sikar Road Jaipur



DIVINE ENCLAVE, Jaisinghpura Road, Ajmer Road, Jaipur

OUR LANDMARKS



CORPORATE PARK, Gopal Bari Jaipur



CITY MALL, Jhalawar Road Kota



DD CITY MALL, MLB Road Gwalior



GOVERDHAN KRIPA, C-Scheme, Jaipur



ARUNODAYA, Tilak Nagar Jaipur



NEELKANTH HEIGHTS, Hawa Sadak, Jaipur



THE METRO, Rambagh Circle, Jaipur