

## Location Map



### Promoters & Developers



Rajasthan's 1st ISO 9001 : 2000 Real Estate Group  
Rajasthan's 1st CRISIL Rated Real Estate Group  
TOWNSHIP-COMMERCIAL-RESIDENTIAL-MALL

### ARG Housing Pvt. Ltd

Regd. & Corp. Off: E-52, Chitrangan Marg, C-Scheme, Jaipur 302 001, Mob. : +91 9314 238 914

Phone : + 91 141-4086677 Fax : +91 141-4086666

Website : [www.arggroupjaipur.com](http://www.arggroupjaipur.com), [www.argpuram.com](http://www.argpuram.com) • E-mail : [sales@arggroupjaipur.com](mailto:sales@arggroupjaipur.com)

### Distance from main place –

Jaipur Airport	– 17 k.m.
Jaipur Railway Station	– 21 k.m.
Jaipur Bus Stand	– 20 k.m.
Narayan Singh Circle	– 17 k.m.
Ajmeri Gate	– 16 k.m.
Transport Nagar	– 14 k.m.
Birla Temple	– 16 k.m.
Raj vilas Hotel	– 8 k.m.
Kanota	– 3 k.m.
Nalla Fort	– 3 k.m.

### Site Address

ARG PURAM, Naila Road, Kanota, Agra Road, Jaipur

### Landscape Consultant

**Quintessence**  
Landscape Architecture Environmental Design Conservation  
Quintessence

### Architects

**m | a | r | c | h | i | t | e | c | t | s**  
Maithel & Associates Architects Pvt. Ltd.  
[www.maarchitects.in](http://www.maarchitects.in)

### Services Consultant

**SPECTRAL**  
Spectral Consultants Pvt. Ltd.

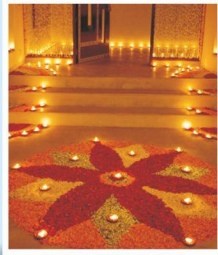
This brochure is not a legal document. It only describes the conceptual plan to convey the intent and purpose of the developers.  
The specifications and details mentioned in this brochure are tentative and are subject to change at the sole discretion of the developers and/ or the architects.

jaipur@arggroupjaipur.com | 9828155512





## A combination of peace & accessibility



A house is just not an enclosure within four walls for us. It is a place which gives you true satisfaction and comfort which, calls home. We understand how glorious you want your dream home to be. Here we are committed to provide you a different lifestyle where world of convenience awaits with pure bliss.

At ARG Puram which gives you the best value of your hard earned money. Here you get ownership of the land. The peace and serenity of suburban Jaipur, Unpolluted, Fresh Air, Open Sky, Greenery and your own independent bungalow on one hand.

It is a combination of three types of Duplex Bungalows. These Villa's blends the best of architectural design and contemporary luxury with all modern amenities. All these dwelling delights are set amidst a tranquil setting with good neighborhood witnessing very fast paced social infrastructure development including the roads, electricity, sewage & water supply along with residential & commercial establishment which attributes that charm to your day to day routine life.

To enjoy a blissful, peaceful and lively ambience place, just own a home at ARG Puram.

## First Green Rated City of Rajasthan

### What does Green construction signify?

It means smart design which gives positive impact on health of residents. Eco friendly design, efficient utilization of natural resources like water & light.

### Benefits of Green

Requires low maintenance. Give durability and longevity. Allows abundant natural resource like fresh air and sunlight. Develops energy efficient design. Prevent scorching heat reaching house during summers.

Facility	:	Community Centre, Business Shopping Centre, Health Facility, School, Gym, Play Ground, Temple, Party Lawn, Swimming Pool
Features	:	Volley ball Court, Badminton Court, Jogging Park, Lawn Tennis Table Tennis, Games Room, Music & Dance Centre, Yoga Centre, Library, Multi Purpose Hall
Other Facility	:	Water, Light, Sewerage, 60 Feet Main Road, Road Light Green Area, Harvesting, Earthquake Structure, Underground Light Wire Concedes Copper Wiring & Switches
Township	:	Complete Develop Road & Footpath Designer Door Lush Green Landscaping

## Special Highlights

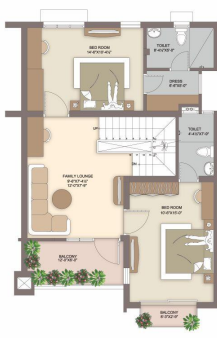
- ARG Vintage Homes in Association with Age Ventures India.
- Land Allotted for Mahaveer Commerce College, A Unit of Mahaveer School.
- Exclusive Block for Jain Community with Jain Temple.
- Gated Community and Security System







GROUND FLOOR



FIRST FLOOR



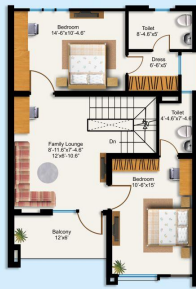
**TYPE A Deluxe**  
**3 BHK Deluxe Duplex Villa**  
 with Covered Car Parking  
 24'0" X 50'0" (133.33 Sq. Yds.)  
 2087.84 Sq. Ft. Super Built-up Area  
**GROUND FLOOR**  
 Drawing, Dining, 1 Bedroom, Utility Area, Kitchen, Private Garden & Backyard  
**FIRST FLOOR**  
 2 Bedroom, Attached Toilet, Family Lounge & Balcony

## SPECIAL FEATURES

Flooring in Bedroom & Living Room -	Vitrified Tiles
Kitchen Counter Slab -	Granites
Window -	Wooden
Door -	Stone/Wooden threshold & Flash Doors
Finishing (inner) -	Plaster & Distemper
Tiles (Toilet) -	7 Feet
Tiles (Kitchen) -	2 Feet
Finishing (Outer) -	Paint
Sanitary Pipes -	P.V.C.
Supply Pipes -	C.P.V.C.
Kitchen Sink -	Steel
Bathroom -	With European WC



GROUND FLOOR



FIRST FLOOR

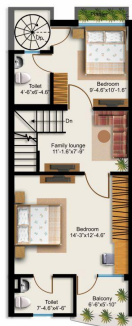


**TYPE A**  
**3 BHK Deluxe Duplex Bungalow**  
 with Car Parking  
 24'0" X 50'0" (133.33 sq. yds.)  
 1911.84 sq. ft. Super Built Up Area  
**GROUND FLOOR**  
 Drawing, Dining, 1 Bedroom, Utility Area, Kitchen, Private Garden & Backyard  
**FIRST FLOOR**  
 2 Bedroom Attached Toilet, Family Lounge & Balcony

## ACTUAL SITE PHOTOGRAPHS



GROUND FLOOR



FIRST FLOOR



**TYPE B**  
**2 BHK Deluxe Duplex Bungalow**  
 with Car Parking  
 15'0" X 50'0" (83.33 sq. yds.)  
 1352.65 sq. ft. Super Built Up Area  
**GROUND FLOOR**  
 Drawing, Dining, Utility Area, Kitchen & Backyard  
**FIRST FLOOR**  
 2 Bedroom Attached Toilet, Family Lounge & Balcony



GROUND FLOOR



FIRST FLOOR



**TYPE C**  
**2 BHK Duplex Bungalow**  
 13'6" X 35'0" (52.50 sq. yds.)  
 1041.74 sq. ft. Super Built Up Area  
**GROUND FLOOR**  
 Drawing, Dining, Utility Area, Kitchen & Backyard  
**FIRST FLOOR**  
 2 Bedroom Attached Toilet, Family Lounge & Balcony

